



White box digital twins

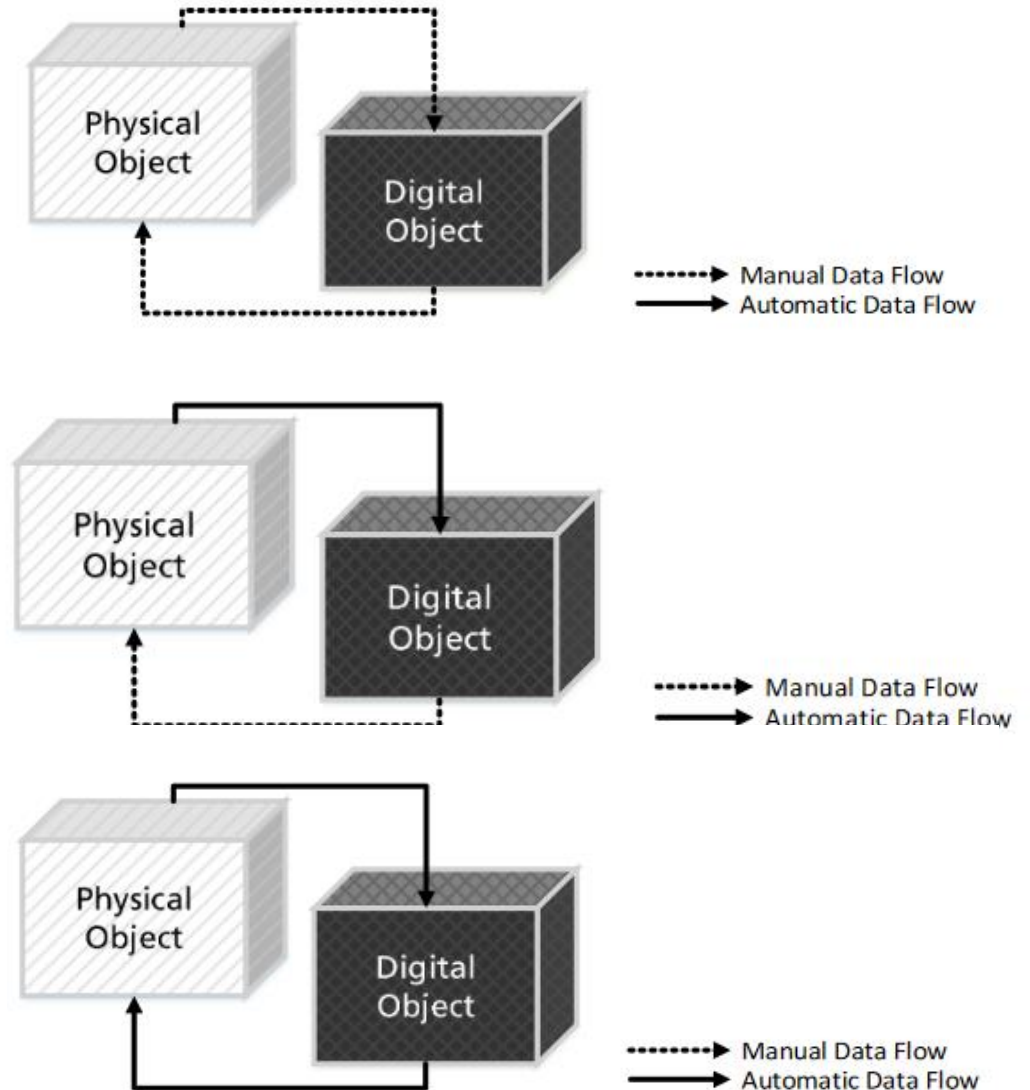
Diggin Discussions on Digital Twins

Marco Molinari, Department of Energy Technology

11/04/2024

Digital model, digital shadow and digital twin

- **Digital model:** digital version of a pre-existing or future physical object, with no automatic exchange of data between the physical object and the digital model
- **Digital shadow:** the digital representation of an object that has only one direction of data flow: the change in the state of the physical object implies a change in the digital object
- **Digital twin:** the data flow between the existing physical object and the digital object is fully integrated in both directions.

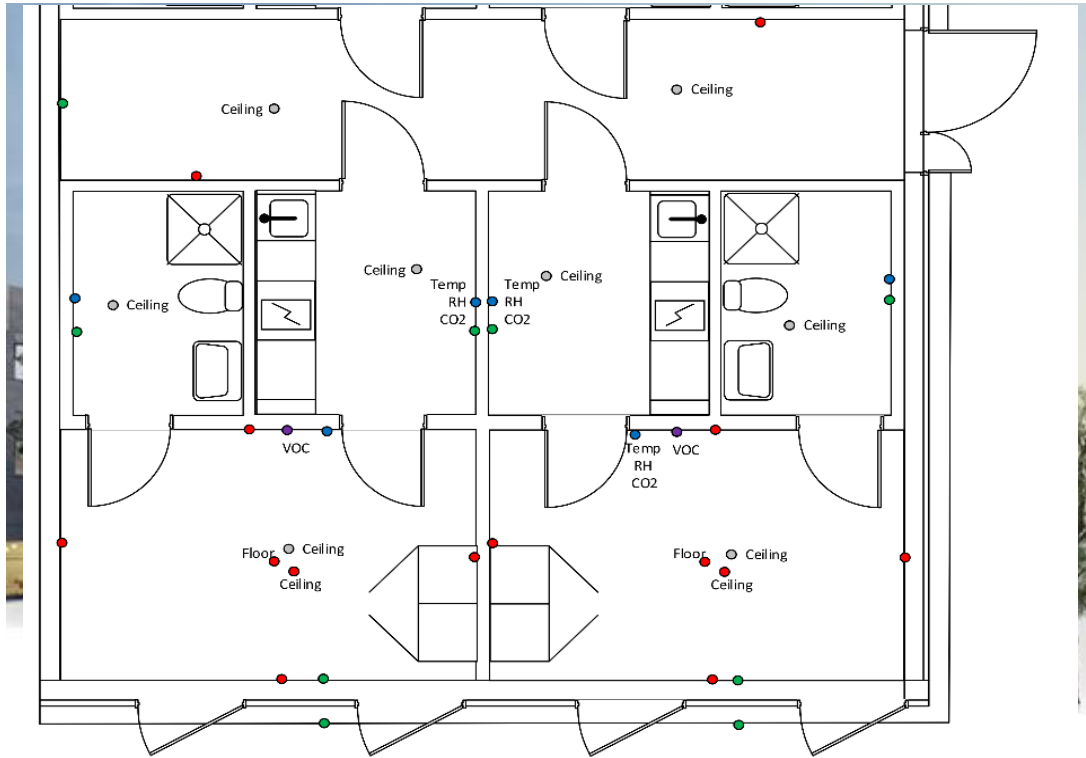


Digital twins in buildings: components and architecture



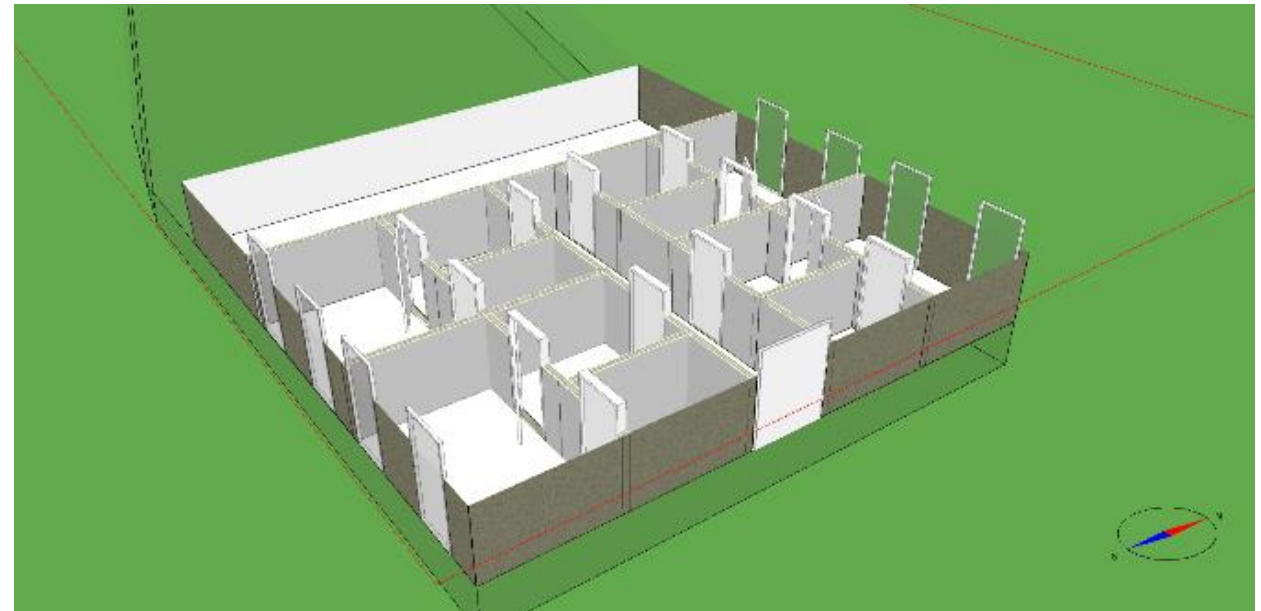
Testbed KTH: white box model in IDA-ICE

Building



- Temperature
- Pressure
- VOC
- Temp, RH, CO2
- Motion detectors

Calibrated building model in IDA-ICE



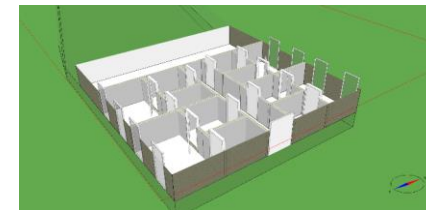
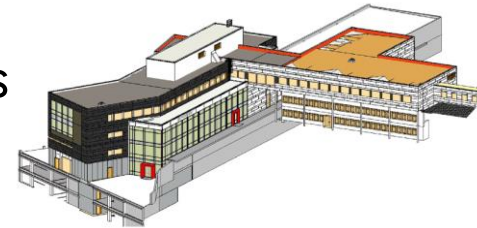
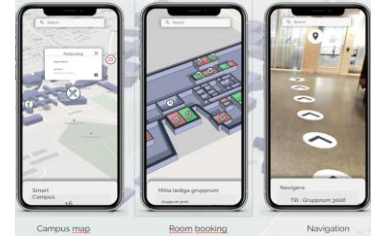
Why a digital twin? Challenges and opportunities

Challenges

- Model creation
- Real-time data integration
- Data management
- Data processing and analytics
- Visualization of results

Opportunities

- Services, e.g, room bookings, occupancy analytics
- Monitoring – use better the data
- Fault-detection – real time diagnostics
- Optimized operation
- **User interaction (e.g., feedback to users, visualization of room occupancy and comfort conditions)**
- **Tailored control with user feedback**
- Augmented reality - building operators





Thank you for your attention!